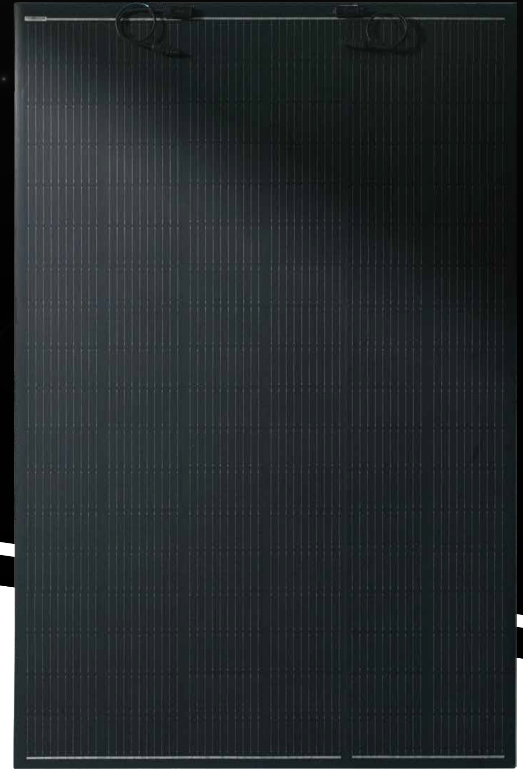


SAT-520-F8MA

520W

Solar modules flexibles



Component features



Lightweight

Glass-free modules are 70% lighter than conventional conventional glass modules.



Flexibility

Special processes and materials make components flexible. They can be bent to adapt to different curved surfaces.



Low transport costs

The equivalent shipping cost is 1.5 times the number of conventional modules in the container. The shipping cost per piece is 33% lower than conventional modules.



Easier installation

The components are easy to move, quicker to install quicker to install, effectively reducing the difficulty of construction. Lower labor costs.



High return on investment

High energy efficiency, reduced BOS, effective reduction in LCOE costs.

Quality management system

ISO 9001: 2015



Linear performance guarantee

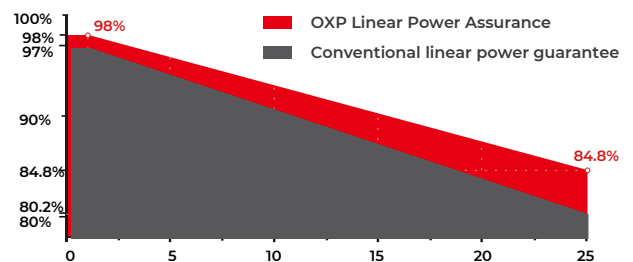


Power assurance



Quality assurance (QA)

Linear power guarantee

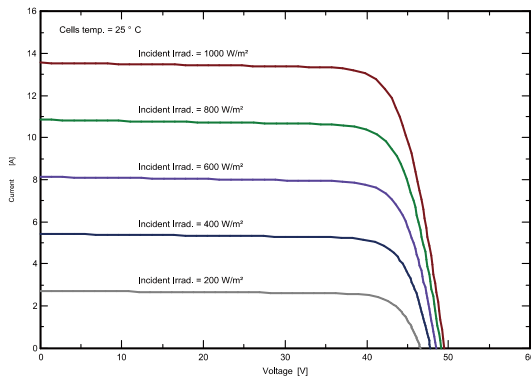


OPENAX

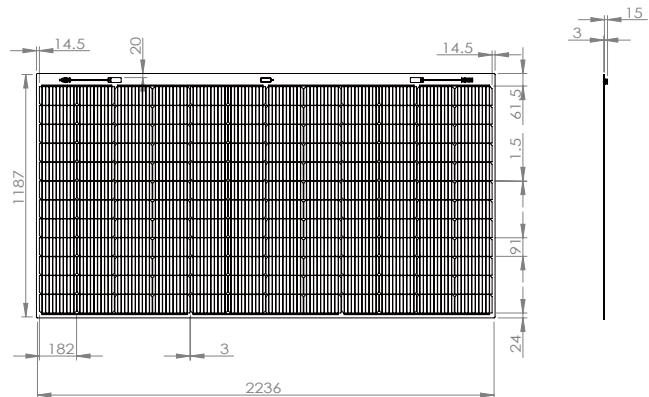
- 8 rue de L'EST, 92100 Boulogne-Billancourt
- 6/18 rue Gustave Eiffel - Gretz Armainvilliers, France, 77220, France

Email: contact@openax.com
Website: www.openax.com
Logistic: logistics@openax.com

Current-voltage curve



Assembly drawing



Current-voltage curve

Model number	OXP-520-F8MA
OXF Peak power Pmax (W)	520W
Optimum operating voltage Vmp (V)	42.29V
Best working current Imp (A)	12.31A
Open-circuit voltage Voc (V)	49.50V
Short-circuit current Isc (A)	13.56A
Module conversion efficiency (%)	19.59%
Module operating temperature (°C)	-40°C to 85°C
Maximum system voltage (VDC)	1500VDC
Maximum series fuse current (A)	25 A
Application class	Class II
Power tolerance	0~ +5W

OXF: Irradiation 1000W/m², cell temperature 25°C, AM=1.5.

Product specifications

Model number	
Solar cell	Monocrystalline
Cell size (mm)	182×91mm
Number of cells	144
Module size (mm) <without junction box> (mm)	L:2236*W:1187*H:3 mm
Module size (mm)	L:2236*W:1187*H:18 mm
Module weight (kg)	7.9kg
Rear panel	Blanc
Junction box	IP 68
Output cable	4mm ²
Cable length	(+)/(-)500 mm or custom lengths
Connector	Compatible MC4

Temperature coefficient

Nominal battery operating temperature temperature (NOCT)	41 ± 2°C
Temperature coefficient Pmax	-0.35%/°C
Temperature coefficient Voc	-0.25%/°C
Temperature coefficient Isc	0.050%/°C

Packaging information

Container type	Truck with platform 13,5 m	Flat-bed truck 17.5 m
Quantity of single gland/pcs	70	70
Number of containers/pcs	1400	1960